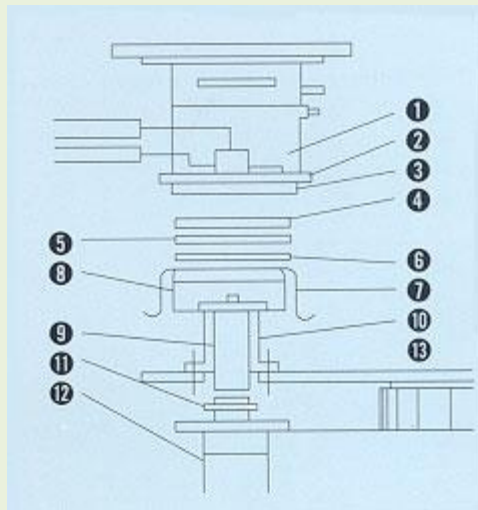
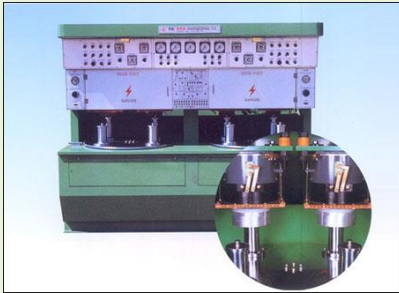


## INSULATION FOR “COOKWARE BOTTOM BRAZING”



1. Heating Coil (Head Coil)
2. Cooling Plate
3. Asbestos Plate(SINDHANIO)
4. Heating Plate (SUS 430)
5. Stainless Steel Plate
6. Aluminium Plate
7. Cookware Product Being Processed
8. Aluminium and Asbestos(Sindhania) Brazing Mold
9. Product Elevator
10. Product Elevator Support
11. Elevator Cylinder Axis
12. Oil Pressure Cylinder (Φ 80, L100)
13. Rotary Table : Indexing Drives

Thermal Insulation Industries is engaged in manufacturing of High Temperature Thermal insulation boards(Non-Asbestos) like SINDHANIO-350,SINDHANIO-550,THERMO LIGHT & THERMO IMPACT. These boards are made using cement, Fibers & Mineral materials & have high mechanical strength with good insulation property.

Our company is based at Vadodara (Gujarat, India).

**Our product “SINDHANIO-350” is best suitable as Insulation for COOKWARE BOTTOM BRAZING process.**

Cookware industries involve process of brazing Metallic Bottom with Utensils using Induction brazing. Our “SINDHANIO-350” board is used as Insulation barrier to prevent heat flow towards Mandrel & Ram. This in turn avoids heat losses.

By using “SINDHANIO-350”,great amount of ENERGY SAVING is achieved.

“SINDHANIO-350” has got very high mechanical strength along with good insulation property.

Specification	Requirement As per IS:4248	Sindhania 350 Obtained Value	Remarks
Continuous Operating Temperature	-	350 °C (Max)	-
Density (Kg/m <sup>3</sup> )	-	1900	-
Thermal Conductivity (W/m °K)	-	0.64	-
Cross-breaking strength (Kg/cm <sup>2</sup> )	Min. 300	366	Conforms
Crushing Strength (Kg/cm <sup>2</sup> )	Min. 1055	1536	Conforms
Shear Strength (Kg/cm <sup>2</sup> )	Min. 210	437	Conforms
Deformation under Compression, Kgf	Reduction in thickness shall not be greater than 5% nor shall mechanical failure occur, such as cracking or breaking when it is subject for one minute to a load of 4500 Kgf	Reduction in thickness: 2 % No mechanical failure such as cracking or breaking was observed	Conforms

**Standard Sheet sizes available :-** Thickness:- 3.5 , 5 , 6, 8, 10, 12, 16, 20, 25, 30, 32, 40, 50, 75 mm  
Dimensions Of Sheet : 1050 mm(42”) x 1200 mm(48”)